

Compost turner **CMC SF 300**



Compost
Systems



The **CMC SF 300** is the flagship for quality composting. Windrows with a width up to 3.4 m show very good properties for the production of high quality compost and high quality compost substrates.

During the years the **CMC SF 300** has evolved. This optimized solution promises aerobic conditions

for your process.

With a turning performance of more than 1,000 m³/h and a windrow cross-section of up to 3.5 m²/m this machine also meets the expectations of power freaks.

The CMC SF 300 corresponds to the strict criteria of Controlled Microbial Composting.



Compost turner

CMC SF 300



Compost
Systems

Technical data

Maximum width: 3.40 m
Maximum height: 1.60 m

Rotor length: 3.00 m

Machine dimensions: (L) 3.13 m x (W) 4.60 m x (H) 3.40 m (working position)

Engine: Type: Perkins diesel engine with turbocharger
Capacity: 91.2 kW/125 HP
Engine capacity: 4,400 ccm
Cylinder: 4

Hydraulic chassis-height adjustment: 40 cm

Weight: 5.10 t (basic version)

Windrow cross section: approx. 3.5 m²

Rotor driving system: Hydraulically operated

Driving system: Rubber chain infinitely hydraulic driven
driving speed (ca. 0 - 4 km/h)

Turning quantity: +/- 1,500 m³/h

Control: One-hand joystick

Options:

Fleece roller

Air conditioning

Inoculation system

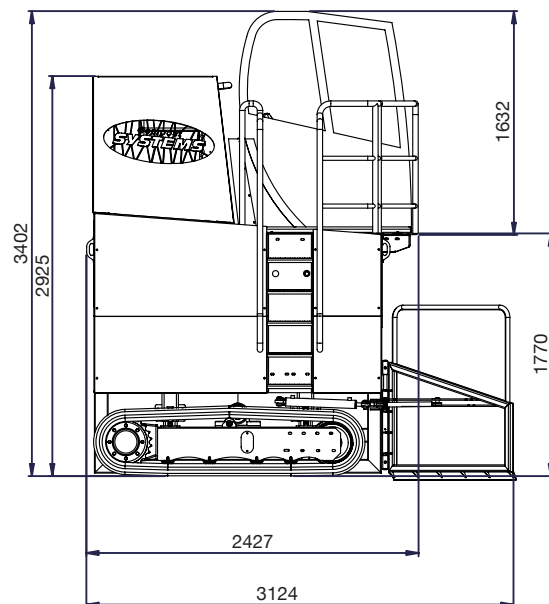
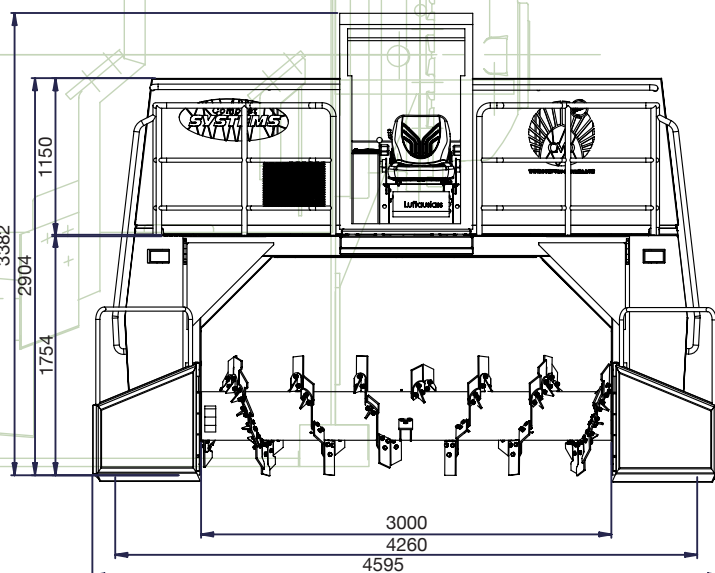
Special colour

Activated carbon filter

Pressure ventilation system

Reverse camera

Further equipment on request!



All information is subject to change without notice. Printing errors reserved.